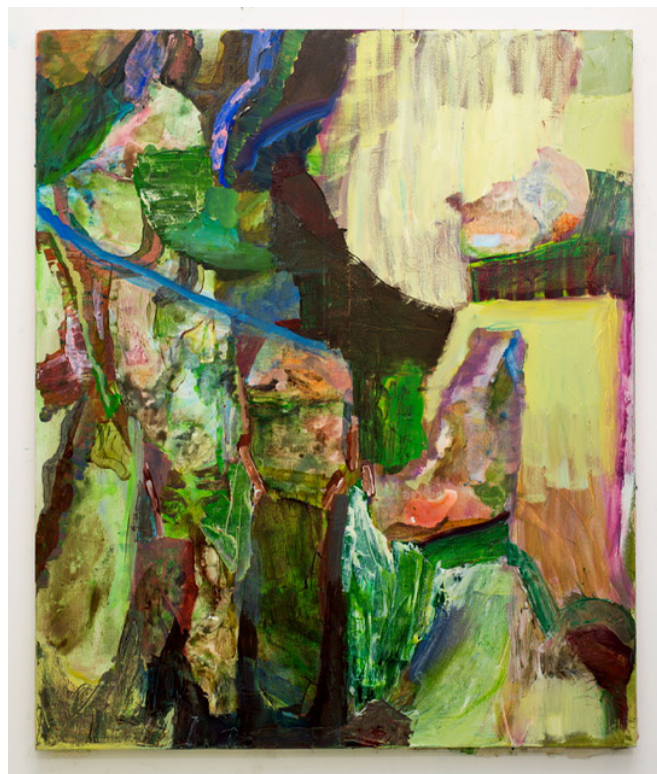


Francesca Mollett

Wild Shade

Opening April 29th 2021

11 Market Place, Henley on Thames, RG9 2AA



Francesca Mollett, Sancreed 2020
Oil and acrylic on calico
120 x 100 cm

Informality is excited to announce Wild Shade, the gallery's first solo presentation with London based artist, Francesca Mollett. Wild Shade brings together an exhibition of new work which responds to Earth's sources of water and the artist's desire to record and share the personal transformation that humans experience through circumstances choreographed by light and weather.

In Wild Shade, Mollett's paintings originate from time spent by a network of wells in Penwith, Cornwall, England. The land of Penwith is both sacred and geologically exploited, large quantities of copper and tin were once mined, and the co-existence of underground water with metal deposits made wells and springs 'holy' and 'healing'.

The journey to the site holds its own experience, as the artist describes walking through passages steeped in ancient history. Mollett navigates by boulder, by tree, looking for signs, harnessing the intricacies of the landscape. The land here is now hollow. Underneath the skin of the surface are caverns. Tunnels were once dug to reach the most valuable ore under the sea. Miners were paid by what they found rather than how deep they went down. West Penwith is described as one of the hottest places in underground Europe, where frequencies of 'Earth Energy' conducted by the depth of the raft of granite emit from the core. In the words of the artist, "An energy is a force of expression. The water produces an effect on the surroundings, both body and land express a frequency."

Navigating towards the springs, Mollett expresses a feeling of being watched by the landscape. She questions whether this is an act of self-surveillance, brought about through new technologies and female identity, or whether it came from the spirit of the place and the ancient energies. In 'Frantumaglia' a fictional autobiography by Elena Ferrante, Ferrante suggests a new meaning of surveillance, that, rather than an exterior organisational force, it is a state exerted from within; 'an emotional tendency of the whole body, and expansion and an inflorescence on and around it.' Mollett identifies with Ferrante's redefinition of surveillance as a state of wakefulness and a drive to expand one's forces, aspiring for her paintings to possess in their layers of light, texture and colour, a vitality expressing a state of wakefulness.

In Wild Shade, we are invited as viewers to experience Mollett's enchanting paintings as potential thresholds for transformation. By visiting the springs, Mollett references the expansive qualities that these places embody and compares this experience to painting. An openness to how corporeal and imaginative states react in a physical process can bring about discoveries beyond our expectations.

About Francesca Mollett

Francesca Mollett, (b. 1991, Bristol) lives and works in London.

Francesca Mollett recently graduated from the Royal College of Art, London and is the recipient of the Aidan Threlfall Award, (2020). Her work has been shown internationally. Recent exhibitions include; Diaries of a Climate, Baert Gallery, LA, USA, (2021); London Grads Now, Saatchi Gallery, London (2020); 50/50, Fold Gallery (2020); Sympathetic Magic, ZONA MISTA, London (2019) and solo exhibition Keyholes at Brockley Gardens, London (2019).

Francesca has co-curated a number of shows, including Dust sheet embroidered snow, Project Gallery, Arundel (2019), The Value of Liveliness, White Crypt, London (2018), and Smoke gets in your eye, rural BAES, near Lewes (2018). Francesca co-ran and founded 'The Benevolent Association of Excellent Solutions', a set of artist studios and project space in Deptford from 2015 – 2016. She previously graduated from The Drawing Year, Royal Drawing School (2015) and BA Fine Art Painting, Wimbledon College of Arts (2014). Francesca is curator of the London Arts Board, a disused municipal noticeboard turned art gallery.

About Informality

Informality is a contemporary art gallery which opened in 2019 in Henley-on-Thames, Oxfordshire. The gallery holds a programme showcasing International contemporary artists' through solo and group presentations that explores topics of the environment and co-existence.

Informality enhances its exhibition programme with accompanying talks and lectures. These are tailored to aid emerging collectors in researching artists and understanding the art market. Outside of the gallery's own walls, Informality has committed to site-specific collaborations. In late 2019 Informality collaborated with Jamie North and Pi-Artworks to bring the artists first solo exhibition in the United Kingdom, Inflection (11–17 November 2019, Pi Artworks), to Central London's Fitzrovia district. The bustling metropolis provided a poignant location for a show exploring the current climate crisis and the fragility of human cities in the face of nature.

In 2020, Informality collaborated with the Sidney Nolan Trust to exhibit works of gallery artist, Anthony White in Anthony White at The Rodd (21 May - 25th June 2020). White's work was displayed digitally throughout The Rodd, a 17th-century property and outbuildings in Presteigne, Wales where renowned Australian artist, Sidney Nolan resided for 10 years. The project supported Anthony White's award of the Creative Arts Fellowship which was postponed due to Covid 19 and international travel restrictions.

For press enquiries and hi res images please contact:

Zee Levine
zee.levine@informality.co
+ 44 (0) 1491 577 115